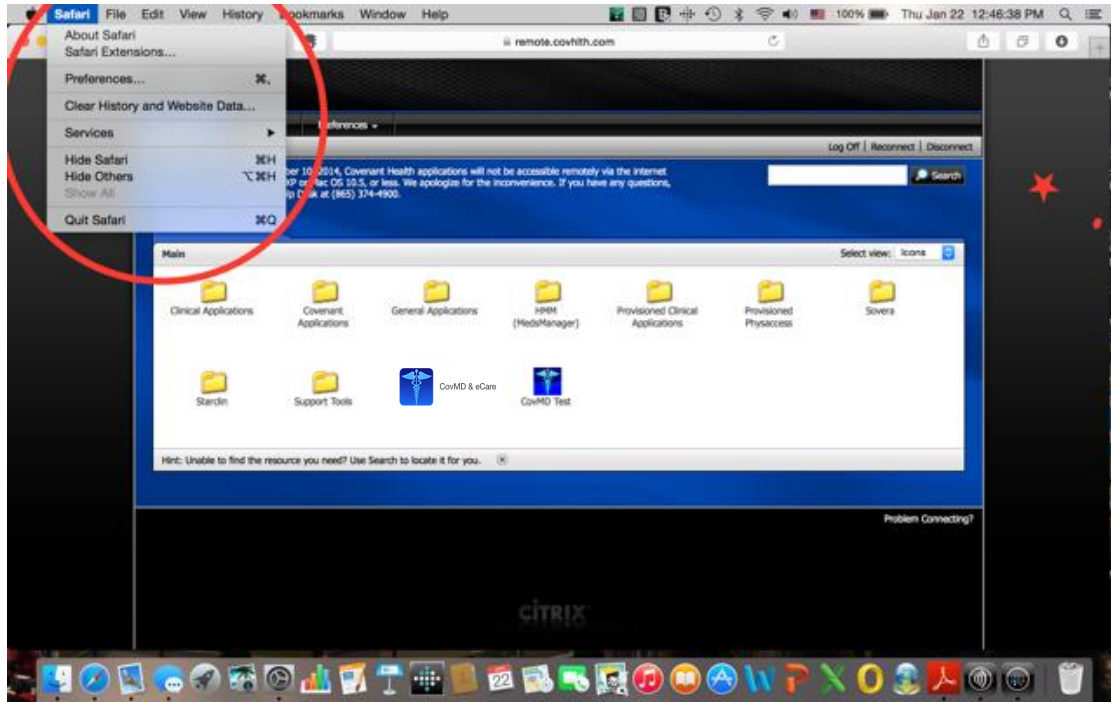
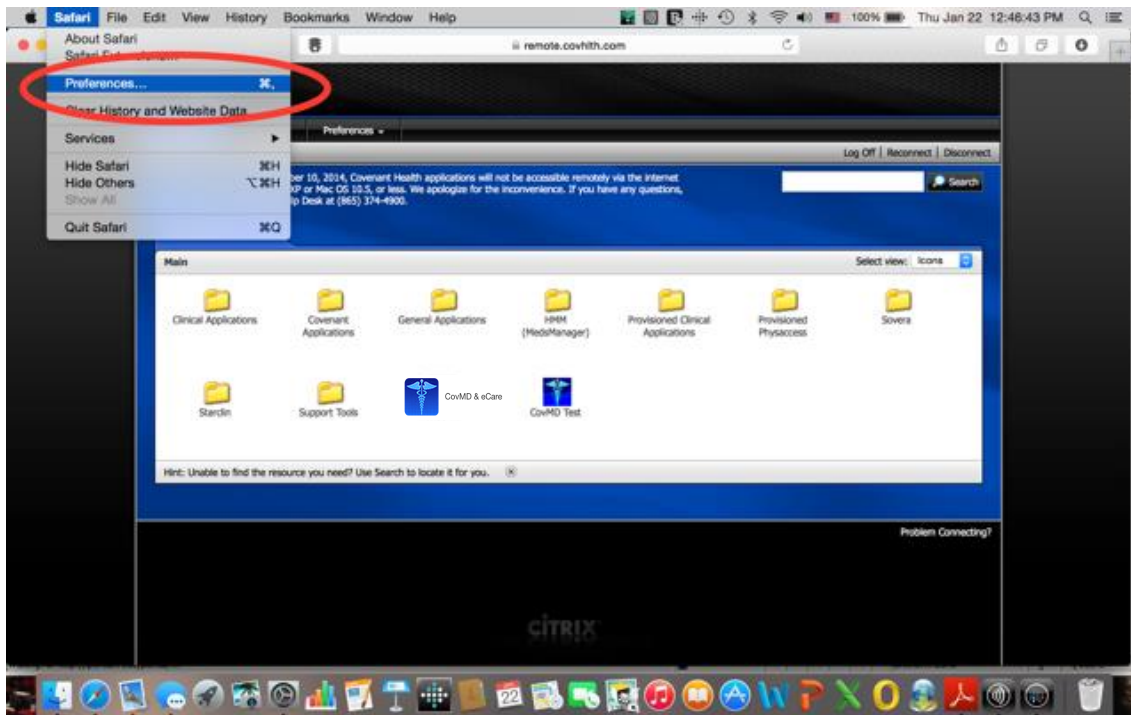


# Attachment A

## MAC / Citrix / Safari Connection Fix.

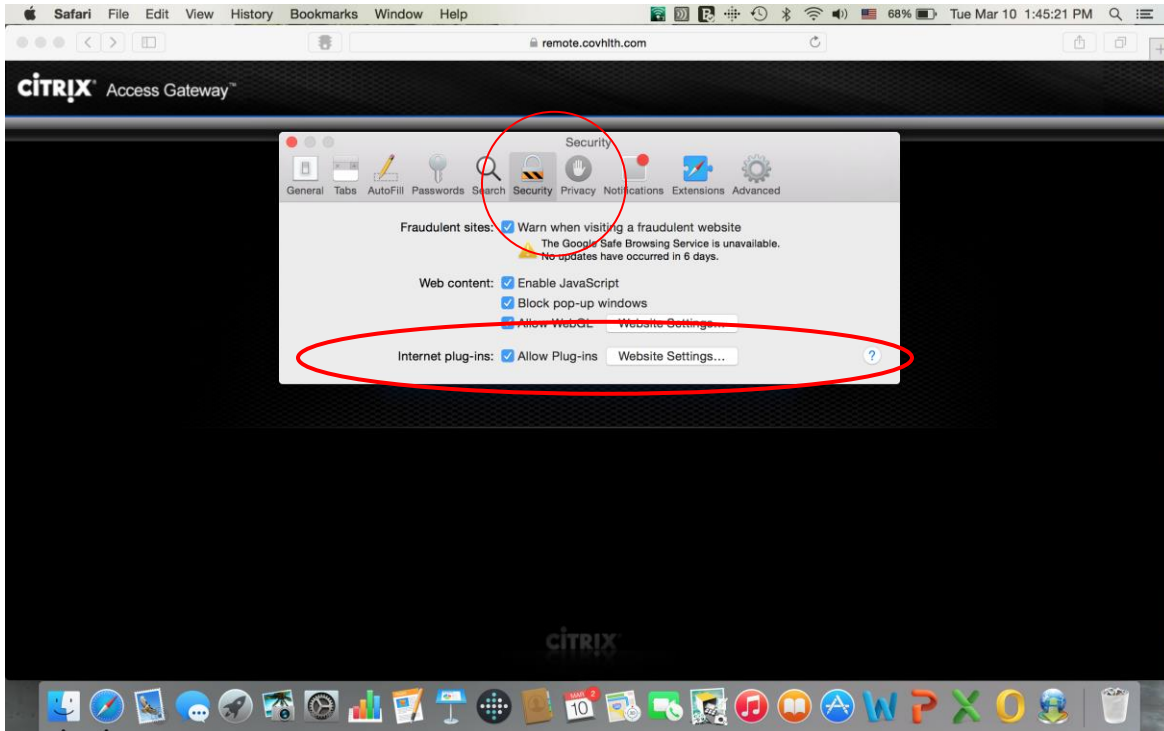


**Select Safari>Preferences**

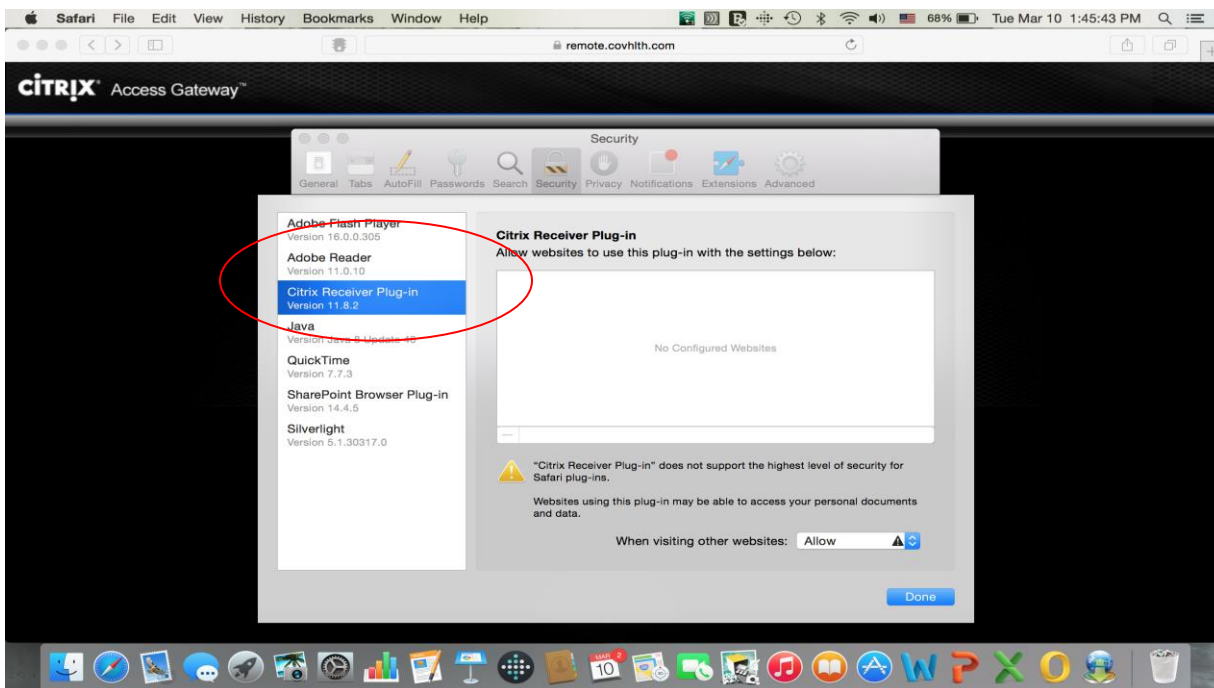


# Attachment A MAC / Citrix / Safari Connection Fix.

**Select Security**  
**Select "Internet Plug-ins:**  
**Click on "Website Settings"**

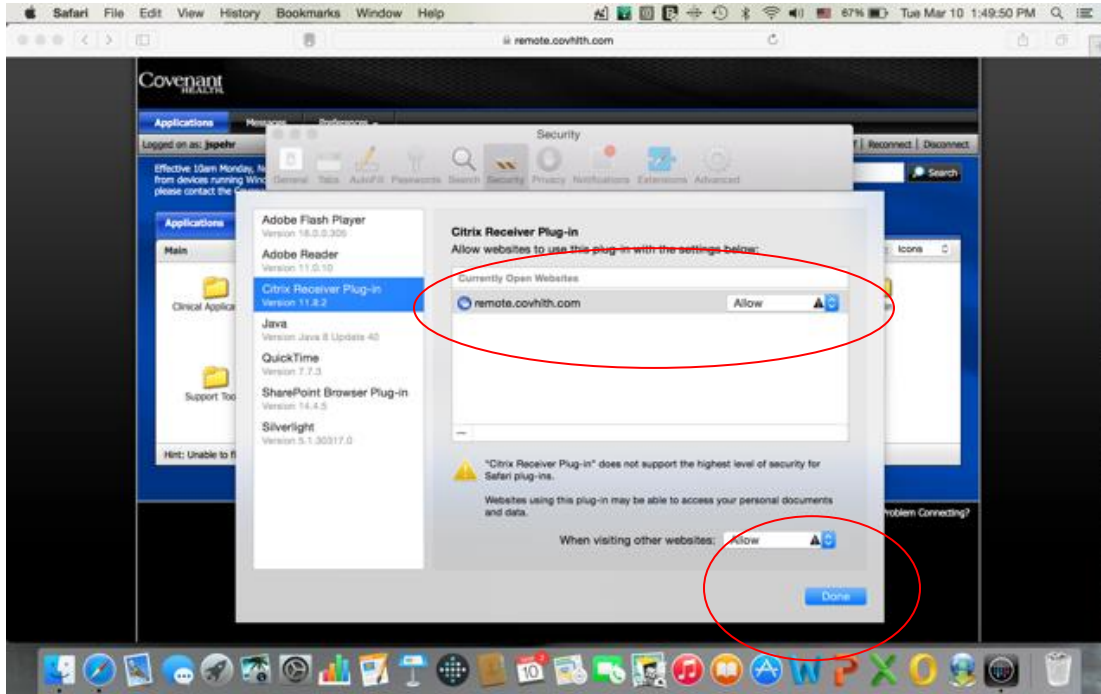


**Select > Citrix Receiver Plug-in**



**Attachment A**  
**MAC / Citrix / Safari Connection Fix.**

**Select > Citrix Receiver plug-in**  
**select " Always Allow"**



**Select Done**  
**Close the preferences**  
**Launch eCare**