

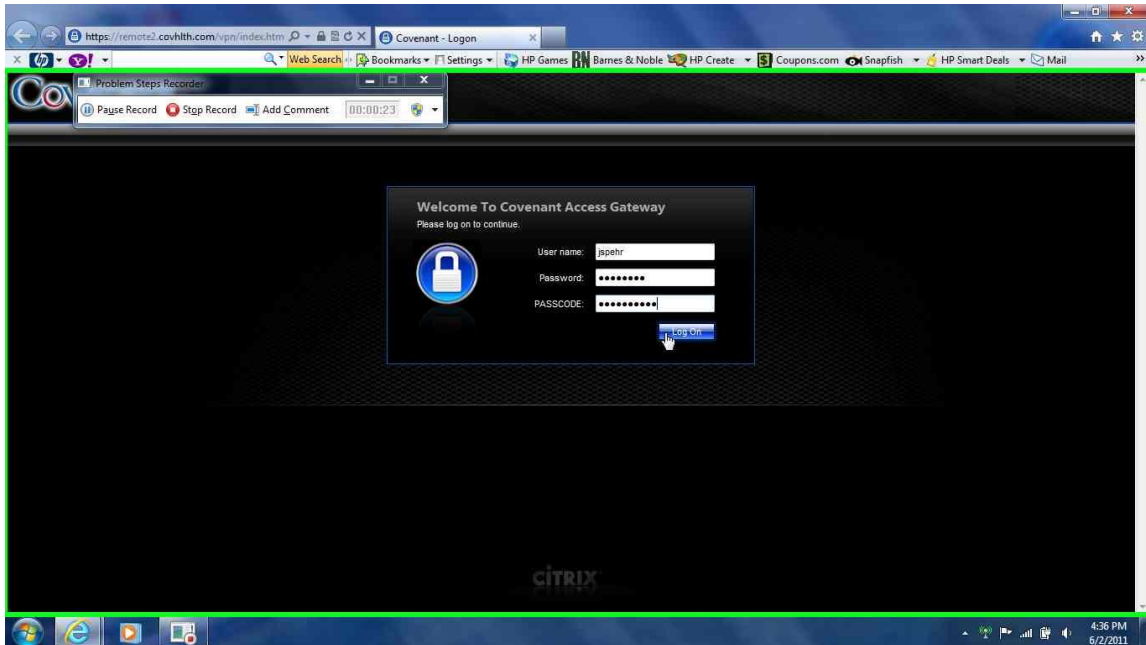
Using a FOB or Soft Token for Covenant Physicians Portal Login

Click on the link below

<https://remote.covhlth.com/vpn/index.html>

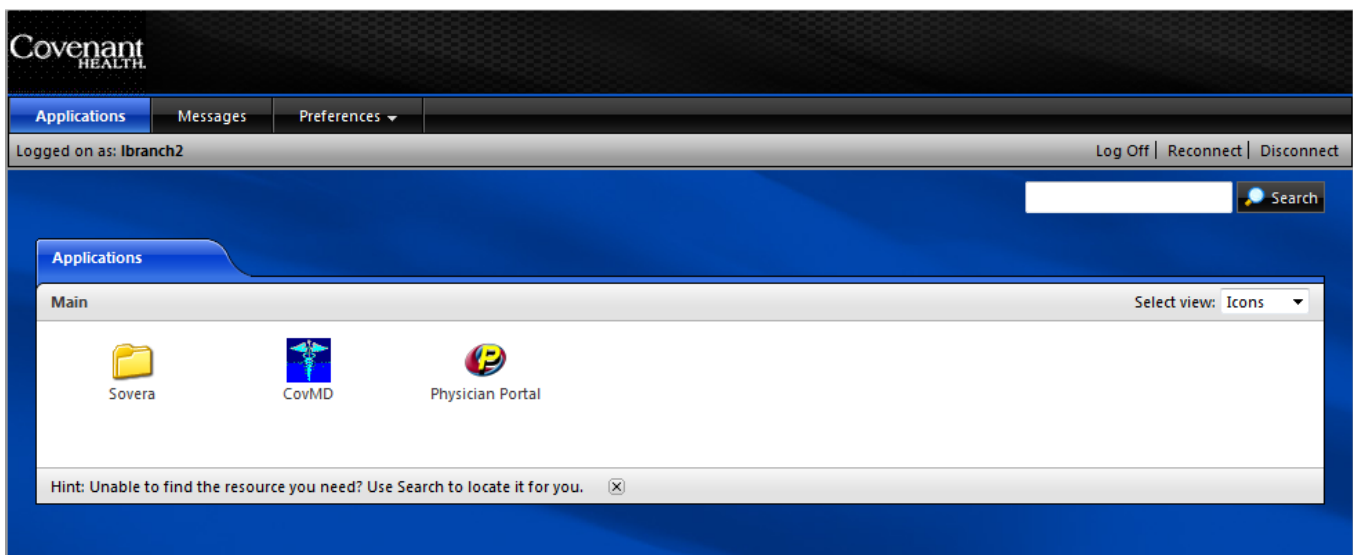
Using your FOB, enter your FOB Log-in information in the 3 boxes:

- 1) User Name
 - 2) Password
 - 3) Pass code and 6 digits code from FOB
- 3a) OR the 8 numbers from your Soft Token



Once the Citrix program loads this is what you will see
This is the application screen

- 1) Yours will have 3 icons: CovMD, Physician Portal and Sovera
- 2) ONLY click on the COVMD or Physician Portal icon



Using a FOB or Soft Token for Covenant Physicians Portal Login

Using the COVMD icon will take you to this screen

A benefit of going to this page is for the notices

Click "sign in" and you will go to the Log-in page - below

The screenshot shows the Covenant Physician Intranet homepage. At the top, there is a navigation bar with links for CovJTE, CovLearn, CovMedia, CovNet, CovNurse, CovRX, CovTeams, and CovWorkFlow. The main header features the CovMD logo (Covenant Physician Intranet) on the left, three small images of healthcare professionals in the center, and the Covenant Health logo on the right. The main content area is divided into three columns. The left column has a 'Physician Portal' section with a 'Login' button and a 'Clinical Browser' section with a link to 'Covenant Health'. Below this is a notice about Tannova's recent upgrade. The middle column has a 'CPOE' section with links to 'Schedule and content of order sets' and 'CPOE Demos'. The right column has a 'Now Available: Computer Based Learning (CBL) for Providers' section, dated Monday, January 21, 2013, with a link to 'Click here for instructions'.

Using the Physician Portal icon will take you to screen

This is also the Main Log-in screen for the Portal

Log-in here

The screenshot shows the 'Physician Portal Login' screen. At the top left, there is a 'Welcome' message. The main heading is 'Physician Portal Login' with a 'last refresh: 13:18' timestamp on the right. Below the heading, there is a 'Log In' section. It contains two input fields: 'Username:' and 'Password:'. Below these fields is a 'Log In' button.